



Val-A-Sure[®] Cooler Validation Kit

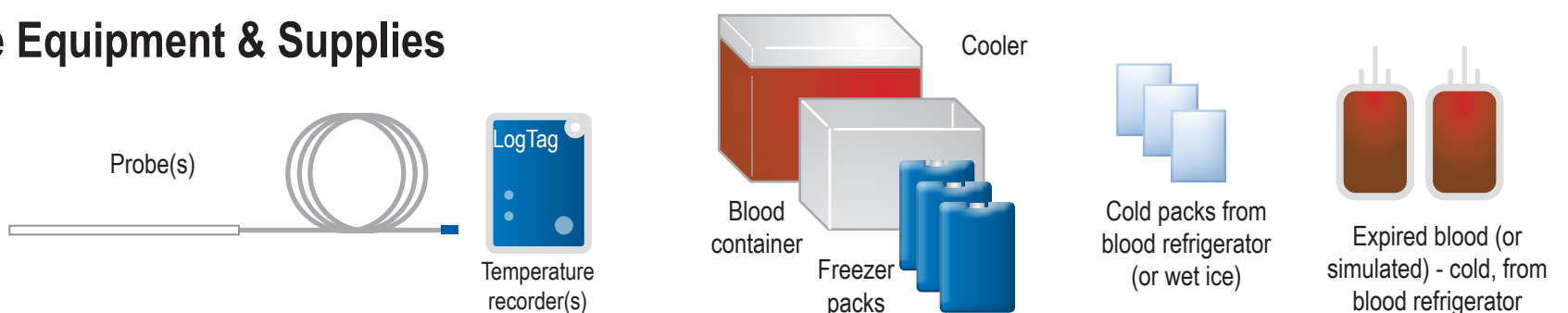
Quick Start Guide



STOP Have you configured the software? See other side for Steps 1 - 3 before completing these steps.

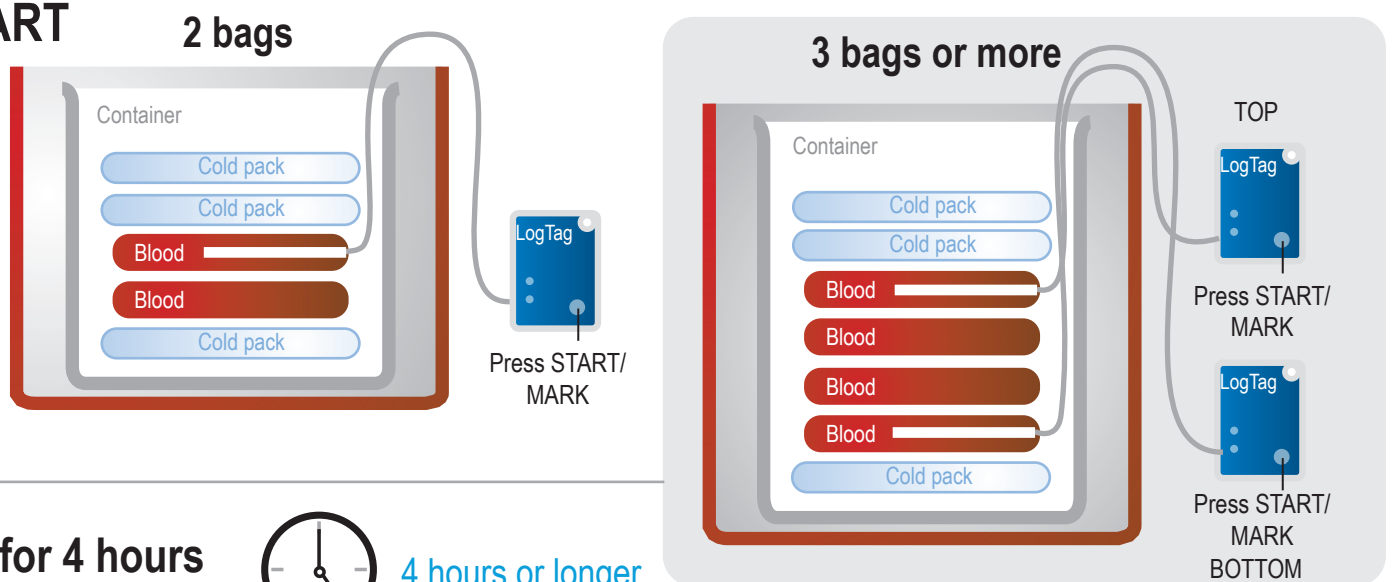
Cooler Validation Instructions with Optional Probes

4 Assemble Equipment & Supplies



5 PACK COOLER and START Temperature Recording

- Place container (for blood units) in cooler and surround with freezer packs
- Insert probe in topmost bag, attach probe to recorder
- Press START button on the recorder. Flashing red then green "OK" indicates temperature is recording.
- Pack cooler with blood units, recorder and cold packs as shown.



6 CLOSE COOLER and wait for 4 hours (or longer depending on your validation protocol)



7 COLLECT recorder and DOWNLOAD Temperature Data to computer



- Launch software on your computer
- Remove recorder from cooler and place in cradle
- Data will automatically download and display

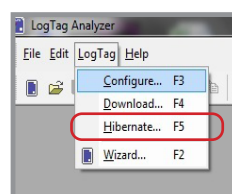
8 VIEW and PRINT Temperature Data, attach to Validation Documents



9 Hibernate Recorder

To extend battery life

- While Recorder is still in cradle:
1. Click on **LogTag** in top menu
 2. Scroll down to select **"Hibernate"**



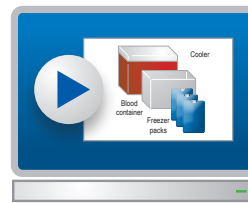
for more information: www.zebra.com/valasure

Rev. 11 - 7-7-2020

Cooler Validation Instructions

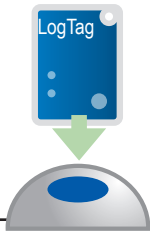
Val-A-Sure®
Cooler Validation Kit

1 Watch video instructions first



Video instructions are also available at www.zebra.com/valasuresupport.

2 DOWNLOAD and INSTALL recorder software, then attach cradle to computer

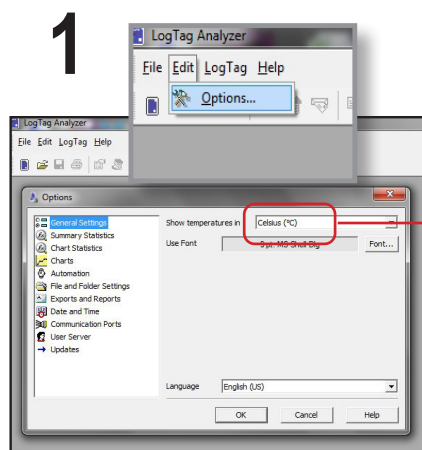


1 Download Log Tag Analyzer software from www.zebra.com/valasuresupport
Follow installation prompts on computer screen.

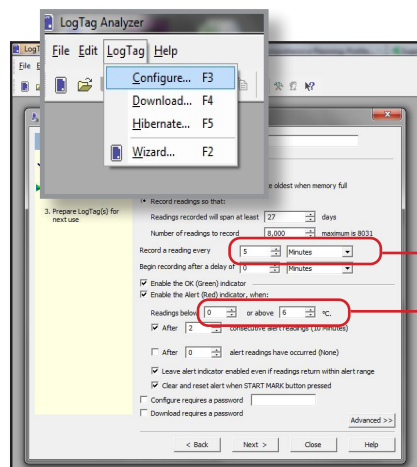
2 Connect cradle to computer's USB port

3 Place recorder in cradle to configure

3 CONFIGURE temperature recorder parameters

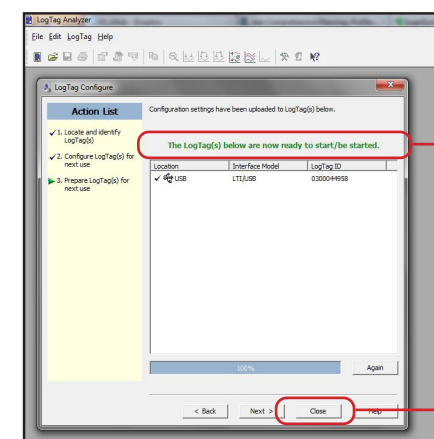


Set to degrees C



Set recording time intervals (every 5 mins. recommended)

Set low and high temperature alarms (1° and 6° recommended)



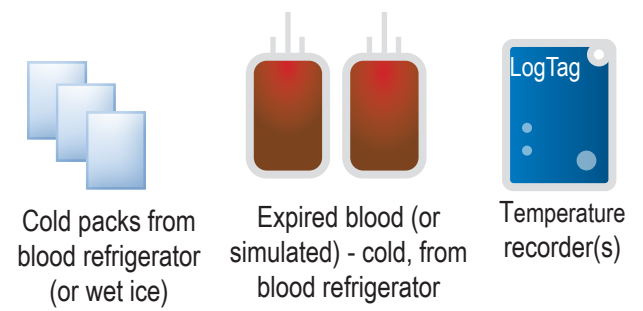
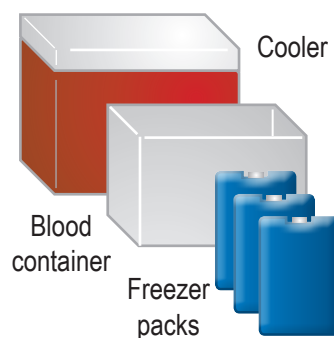
Indicates recorder is configured and ready for use

Click Close to exit

4 Assemble Equipment & Supplies

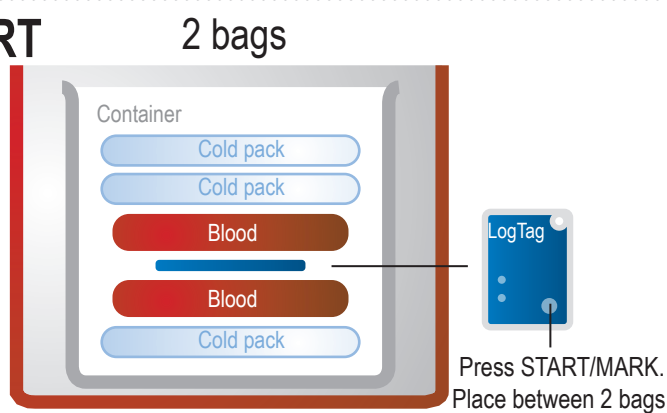


Using optional probes?
See other side for Steps 4 - 9

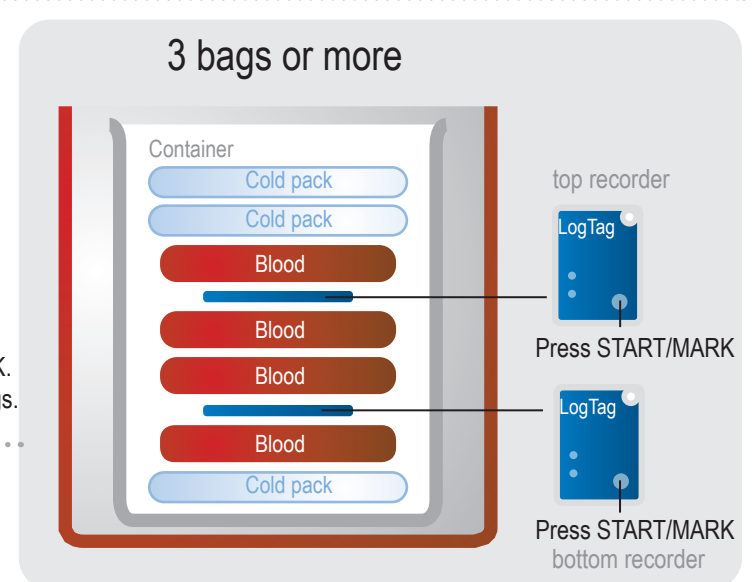


5 PACK COOLER and START Temperature Recording

- Place container (for blood units) in cooler and surround with freezer packs
- Press START button on the recorder. Flashing red then green "OK" indicates temperature is recording.
- Pack cooler with blood units, recorder and cold packs as shown.



Press START/MARK. Place between 2 bags.



top recorder

Press START/MARK

Press START/MARK bottom recorder

6 CLOSE COOLER and wait for 4 hours (or longer depending on your validation protocol)



4 hours or longer

7 REMOVE recorder and DOWNLOAD Temperature Data to computer



- Launch software on your computer
- Remove recorder from cooler and place in cradle
- Data will automatically download and display

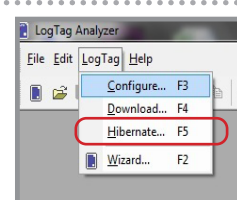
8 VIEW and PRINT Temperature Data, attach to Validation Documents



9 Hibernate Recorder

To extend battery life

While Recorder is still in cradle:
1. Click on **LogTag** in top menu
2. Scroll down to select "Hibernate"



for more information: www.zebra.com/valasure