

## Zebra Aurora VGR Assistant Software Add-On

### Simplify 2D Vision Guided Robotics

Aurora VGR Assistant is an add-on software tool for Zebra's Aurora Design Assistant™ integrated development environment (IDE)—a flowchart-based development environment that includes templates for quickly building machine vision applications.

Designed to simplify the configuration and deployment of 2D vision guided robotics (VGR) tasks with leading collaborative robot (cobot) models, Aurora VGR Assistant targets common manufacturing applications with high-mix, low-volume production.

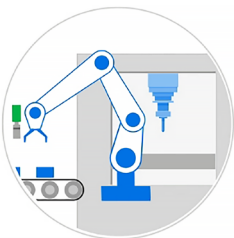
The software delivers both 2D robot guidance and inspection capabilities. Through Aurora Design Assistant, machine vision functionalities are easily triggered for tasks including barcode reading, optical character recognition, inspection and metrology.

### Why Choose Zebra Aurora VGR Assistant?

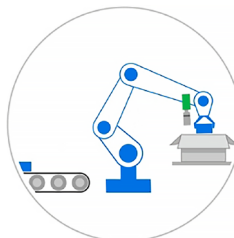
- VGR setup and deployment optimized for cobot users
- Intuitive browser-based user interface
- Faster development and deployment cycle than with low-level building blocks
- Guidance and inspection in one software

### Common Applications

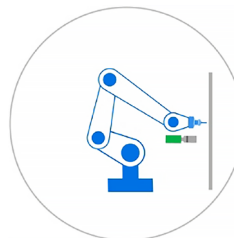
Machine tending



Packaging




Tool guidance




# Key Solution Benefits

Adding VGR capabilities to cobot applications enables accurate and reliable location of unfixed parts and often improves repeatability, cycle times and reliability on the plant floor, while reducing costs associated with labor and fixturing.




### Intuitive

Modern browser-based interface with guided workflows




### Fast setup

Deploy 10x faster than deployment using low-level building blocks



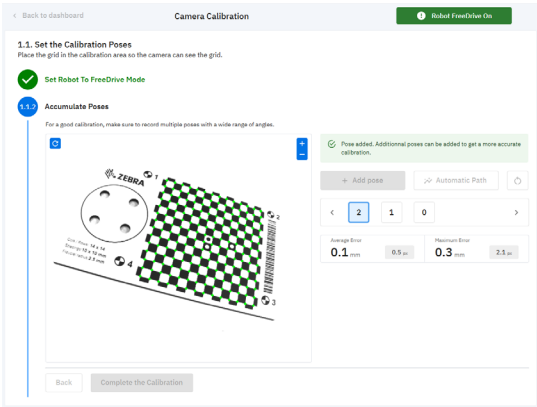
### Robust calibration

Calibration grid tailored for robot guidance and suitable for beginning or advanced users

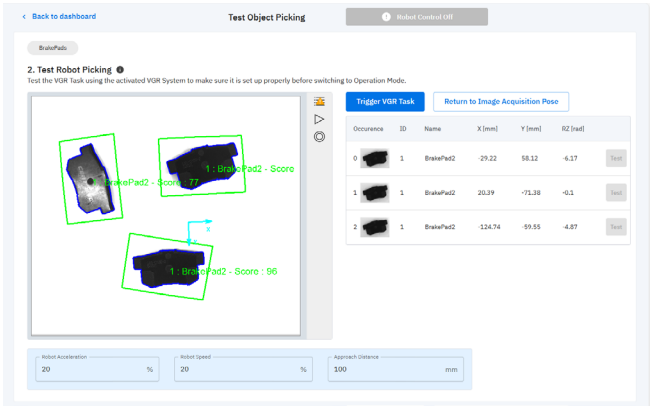


### Guidance plus inspection

Implement 2D guidance plus barcode reading, OCR, metrology and inspection workflows

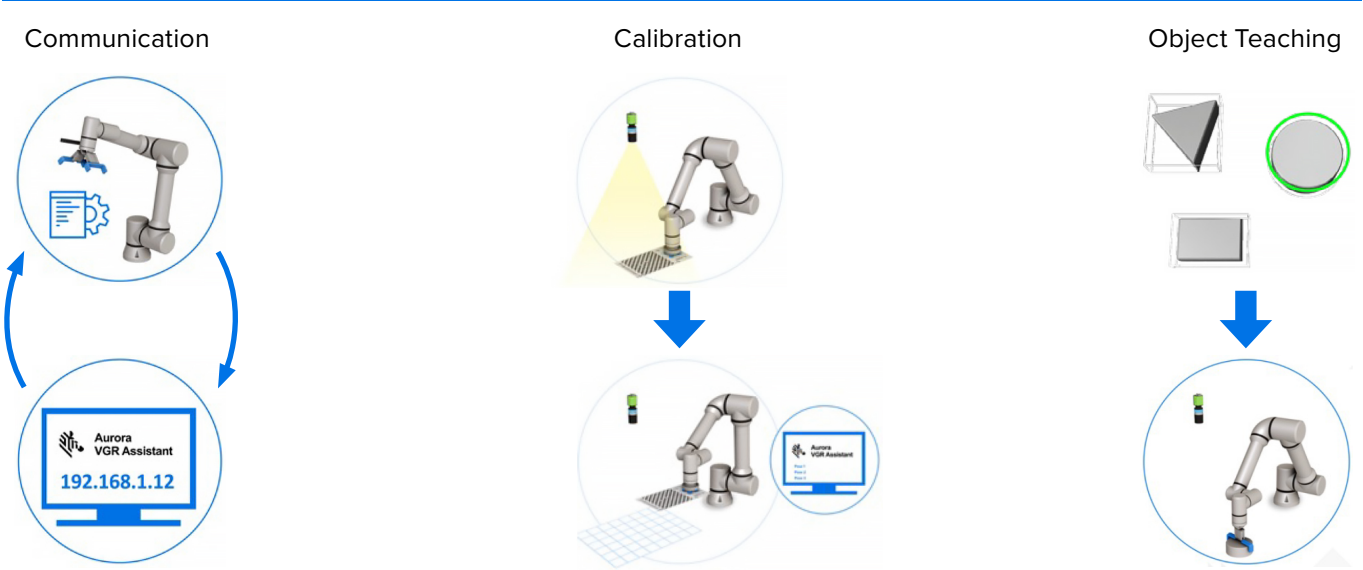


Robust automatic calibration interface



Intuitive object testing interface

## Typical Configuration Workflow



# A Complete, Fully Integrated 2D VGR Solution

The solution includes Zebra's Aurora Design Assistant and Aurora VGR Assistant preloaded on Zebra's 4Sight EV7 industrial vision controller. Aurora VGR Assistant is optimized for Zebra CV60 GigE Vision cameras, which feature the latest CMOS image sensors with resolutions from 2.3 to 12.3 megapixels. A wide variety of accessories such as lenses, lighting and cabling are also available.



## Aurora VGR Assistant

Available as an add-on for Zebra's Aurora Design Assistant software, Aurora VGR Assistant is designed for users with limited to advanced machine vision expertise. The software brings 2D VGR and inspection capabilities to leading robot models from vendors such as Universal Robots.



## Aurora Design Assistant

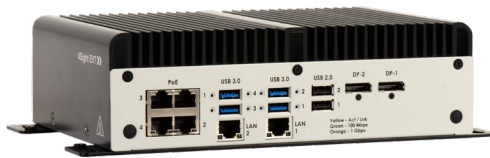
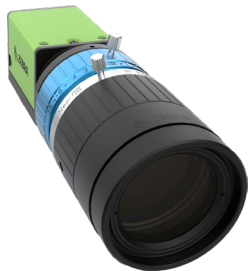
Zebra's Aurora Design Assistant software allows users with minimal coding experience to configure powerful machine vision applications. It leverages an intuitive flowchart-based platform, including ready-made templates, to fast-track development. It offers a deep collection of tools for image capture, processing, analysis, annotation, display and archiving.



## Zebra OneCare™ Maintenance Program

Aurora VGR Assistant users have access to a Maintenance Program, which covers hardware, software or both.

[www.zebra.com/onecare](http://www.zebra.com/onecare)



For additional information, please visit  
[www.zebra.com/aurora-vgr-assistant](http://www.zebra.com/aurora-vgr-assistant)

## Expert Support

Looking for support? Zebra's partners offer expert assistance to ensure the components of your vision-guided robot system are properly functioning and matched. You can rely on their expertise in both robotics and machine vision for a unified support experience from setup to deployment and maintenance.



NA and Corporate Headquarters  
+1 800 423 0442  
inquiry4@zebra.com

Asia-Pacific Headquarters  
+65 6858 0722  
contact.apac@zebra.com

EMEA Headquarters  
zebra.com/locations  
contact.emea@zebra.com

Latin America Headquarters  
zebra.com/locations  
la.contactme@zebra.com