



Zebra Print

Printing from Android™ applications made easy

Zebra Print simplifies printing by allowing Android users to print directly from an application or browser without the need for additional programs or developer intervention. Print PDF documents, images and other content on fixed sized labels or different length PDFs and web content* on continuous media. Remove complex printing steps to save time, streamline processes and empower your teams to accomplish more.

Intuitive Design

With an easy-to-use interface, your teams won't experience steep learning curves so that workflows can stay up and running, driving efficiency.

Hassle-free Adoption

Zebra Print requires no developer intervention or additional apps or programs, so it will easily integrate into your workflows.

Part of the Zebra DNA Software Suite

Connect directly to any Zebra DNA printer—mobile, desktop or industrial—to print with confidence every time.

Free Mobile App for Android

The app is available at no cost on Google Play for any devices running Android 10 or later. Simply download, search and connect to Zebra printers and start printing from any Android application.

Requirements

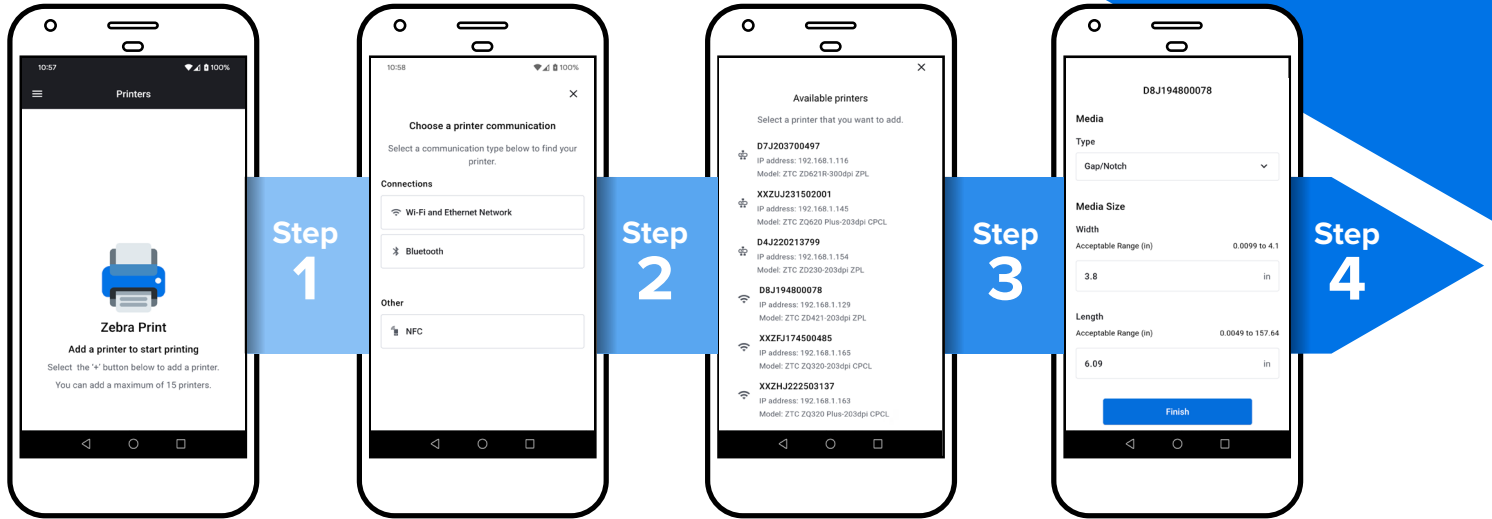
Compatible Printers
ZQ300 Series, ZQ300 Plus Series, ZQ500 Series, ZQ600 Series, ZQ600 Plus Series, ZD200 Series, ZD400 Series, ZD500 Series, ZD600 Series, ZT100 Series, ZT200 Series, ZT400 Series, ZT600 Series, ZR300 Series, ZR300 Plus Series, ZR600 Series, ZR600 Plus Series

Minimum Link-OS™ Version
Link-OS v5.2

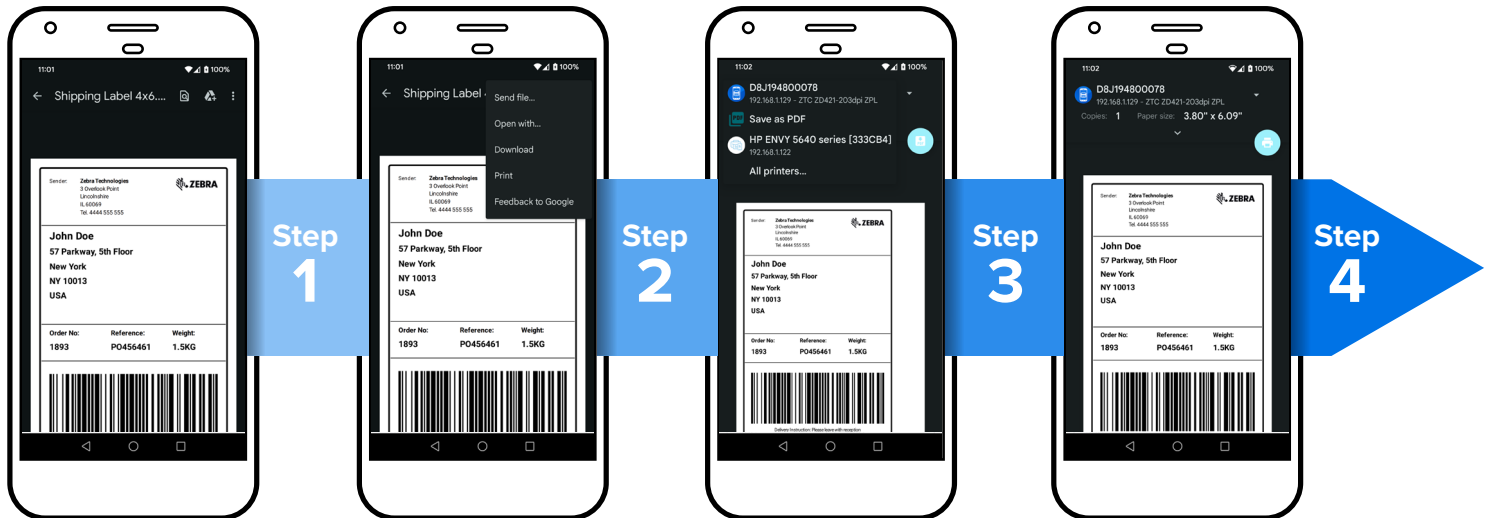
Minimum Android Version
Android 10

*The HTML and elements of a web page can affect the output and therefore the result of web page printing cannot be guaranteed.

How to Start



How to Print



For more information, visit zebra.com/ZebraPrint



NA and Corporate Headquarters
+1 800 423 0442
inquiry4@zebra.com

Asia-Pacific Headquarters
+65 6858 0722
contact.apac@zebra.com

EMEA Headquarters
zebra.com/locations
contact.emea@zebra.com

Latin America Headquarters
zebra.com/locations
la.contactme@zebra.com