

FR55

Accessories Guide

Put the world of critical voice and data communications in the hands of first responders

Revised June 2025



I.	Accessories that POWER devices	
1	Cradles	
1.1	Single-slot cradles	3
1.2	Multi-slot cradles	4
1.3	USB to Ethernet, and Shim	6
1.4	Mounting options for chargers	7
2	Batteries	
2.1	Spare Li-ion batteries with BLE Beacon	8
2.2	Spare Li-ion batteries	8
2.3	Spare battery chargers	9
3	Power supply, cables, and adapters	
3.1	Power supply and cable matrix	10
3.2	Country-specific AC line cords	11
4	Vehicle chargers and accessories	13
II.	Accessories that ENABLE productivity solutions	
5	Vehicle holders and mounts	14
6	Headsets	
6.1	Wired headsets and accessories for Workcloud Sync	15
6.2	Wireless headsets and accessories for voice-directed picking	16
7	Wearable mounts and other accessories	
7.1	Wrist mounts and comfort pad	17
7.2	Wrist straps and arm sleeve	18
7.3	Hand strap, stylus, and tether	19
8	Cables and adapters	20
III.	Accessories that PROTECT devices	
9	Rugged boot, Screen Protectors, and Soft Holster	21
IV.	Workstation Connect Cradle	22

Single-slot cradles



Single-slot charger kit

SKU# CRD-NGTC5B-2SC1B

KIT: Single-slot charge-only ShareCradle. Charges a single FR55 device and its spare Li-ion battery.

- Device with standard battery charges from 0–90% in about 1½ hours.
- Includes: Power supply SKU# PWR-BGA12V50W0WW, DC cable SKU# CBL-DC-388A1-01, and one grey shim SKU# SHIM-CRD-TC5-GRY.
- Sold separately: Country-specific AC line cord ([listed later in this document](#)).



Single-slot USB / Ethernet capable charger kit

SKU# CRD-NGTC5B-2SE1B

KIT: Single-slot USB communication / Ethernet capable charger ShareCradle. Charges a single FR55 and its spare Li-ion battery.

- Device with standard battery charges from 0–90% in about 1½ hours.
- Includes: Power supply SKU# PWR-BGA12V50W0WW, DC cable SKU# CBL-DC-388A1-01, and one grey shim SKU# SHIM-CRD-TC5-GRY.
- Sold separately: Country-specific AC line cord ([listed later in this document](#)), micro-USB cable SKU# 25-124330-01R for USB connection, and USB to Ethernet module kit SKU# MOD-MT2-EU1-01 ([listed later in this document](#)).

Multi-slot cradles



Five-slot charger

SKU# CRDON-NGTC5B-5SC5D

Charge-only ShareCradle to charge five FR55 devices.

- Can be mounted on a standard 19-inch rack system using mounting bracket [SKU# BRKT-SCRD-SMRK-01](#).
- Device with standard battery charges from 0–90% in about 1½ hours.
- Includes: 5 grey shims [SKU# SHIM-CRD-TC5-GRY](#).
- Sold separately: Power supply [SKU# PWR-BGA12V108W0WW](#) and DC cable [SKU# CBL-DC-381A1-01](#). Country-specific AC line cord ([listed later in this document](#)).



Five-slot charger kit

SKU# CRD-NGTC5B-5SC5D

KIT: Charge-only ShareCradle to charge five FR55 devices.

- Can be mounted on a standard 19-inch rack system using mounting bracket [SKU# BRKT-SCRD-SMRK-01](#).
- Device with standard battery charges from 0–90% in about 1½ hours.
- Includes: Power supply [SKU# PWR-BGA12V108W0WW](#), DC cable [SKU# CBL-DC-381A1-01](#), and 5 grey shims [SKU# SHIM-CRD-TC5-GRY](#).
- Sold separately: Country-specific AC line cord ([listed later in this document](#)).



Five-slot Ethernet charger

SKU# CRDON-NGTC5B-5SE5D

Five-slot charge / Ethernet ShareCradle. Charges five FR55 devices with network speeds of up to 1 Gbps.

- Device with standard battery charges from 0–90% in about 1½ hours.
- Includes: 5 grey shims [SKU# SHIM-CRD-TC5-GRY](#).
- Sold separately: Power supply [SKU# PWR-BGA12V108W0WW](#) and DC cable [SKU# CBL-DC-381A1-01](#). Country-specific AC line cord ([listed later in this document](#)).



Five-slot Ethernet charger kit

SKU# CRD-NGTC5B-5SE5D

KIT: Five-slot charge / Ethernet ShareCradle. Charges five FR55 devices with network speeds of up to 1 Gbps.

- Device with standard battery charges from 0–90% in about 1½ hours.
- Includes: Power supply [SKU# PWR-BGA12V108W0WW](#), DC cable [SKU# CBL-DC-381A1-01](#), and 5 grey shims [SKU# SHIM-CRD-TC5-GRY](#).
- Sold separately: Country-specific AC line cord ([listed later in this document](#)).

Multi-slot cradles



Five-slot charger

SKU# CRDON-NGTC5B-5SC4B

Charge-only ShareCradle to charge four FR55 devices and its four spare Li-ion batteries.

- Can be mounted on a standard 19-inch rack system using mounting bracket [SKU# BRKT-SCRD-SMRK-01](#).
- Device with standard battery charges from 0–90% in about 1½ hours.
- Includes: 4 grey shims [SKU# SHIM-CRD-TC5-GRY](#).
- Sold separately: Power supply [SKU# PWR-BGA12V108W0WW](#) and DC cable [SKU# CBL-DC-381A1-01](#). Country-specific AC line cord ([listed later in this document](#)).



Five-slot charger kit

SKU# CRD-NGTC5B-5SC4B

Charge-only ShareCradle kit to charge four FR55 devices and its four spare Li-ion batteries.

- Can be mounted on a standard 19-inch rack system using mounting bracket [SKU# BRKT-SCRD-SMRK-01](#).
- Device with standard battery charges from 0–90% in about 1½ hours.
- Includes: Power supply [SKU# PWR-BGA12V108W0WW](#), DC cable [SKU# CBL-DC-381A1-01](#), and 4 grey shims [SKU# SHIM-CRD-TC5-GRY](#).
- Sold separately: Country-specific AC line cord ([listed later in this document](#)).

USB to Ethernet, and Shim



USB to Ethernet module

SKU# MOD-MT2-EU1-01

Connects single-slot charge/USB charger to a local area network via Ethernet over USB.

- 10 / 100 / 1000 Mbps speed with LEDs on module to indicate connectivity and speed.
- Mechanical switch to choose micro-USB port or RJ45 Ethernet.



USB to Ethernet module kit

SKU# KT-TC51-ETH1-01

Connects single-slot charge / USB charger to a local area network via Ethernet over USB.

- 10 / 100 / 1000 Mbps speed with LEDs on module to indicate connectivity and speed.
- Mechanical switch to choose micro-USB port or RJ45 Ethernet.
- Includes: USB-Ethernet Module [SKU# MOD-MT2-EU1-01](#) and support bracket [SKU# BRKT-TC51-ENET1-01](#) ([listed later in document](#)).



Device cradle cup inserts / shims replacement

SKU# SHIM-CRD-TC5-GRY

One grey replacement cradle insert / shims

- One grey shim for devices with a rugged boot.

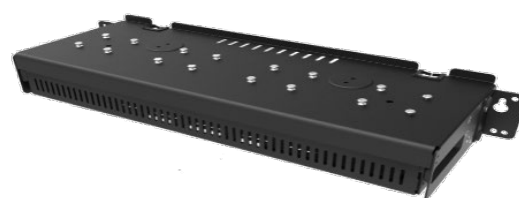
Mounting options for chargers



Rack mounting for space optimization

Optimize available space by mounting any set of five-slot chargers for TC5X on a standard, 19-inch server rack.

- Ideal for customers that have several devices per location.
- Compatible with all five-slot chargers for TC5X.



Mounting bracket

SKU# BRKT-SCRD-SMRK-01

Use five-slot ShareCradle mounting bracket to attach five-slot TC5X cradles to the wall or mount on a 19-inch server rack.

- Offers cable routing slots and removable tray that stores / conceals power supply.
- Adjustable orientations:
 - 25° angle for high-density (five-slot chargers).
 - Horizontal (single-slot or four-slot spare Li-ion charger).

Spare Li-ion batteries



Bluetooth battery with PowerPrecision Plus

SKU# BTRY-NGTC5TC7-44MABLE-01

Standard capacity 4,680 mAh battery with PowerPrecision Plus and BLE beacon.

- Premium-grade battery cells with longer lifecycle and tested to meet rigorous controls and standards.
- Obtain advanced battery state of health information including charge level and battery age based on usage patterns.
- BLE beacon allows device with this battery to be located even if powered off using [Zebra Device Tracker](#).
- Sold separately: Zebra Device Tracker licenses for either 1-year SKU# SW-BLE-DT-SP-1YR or 3-years SKU# SW-BLE-DT-SP-3YR.



Also available: standard battery with PowerPrecision Plus, but without Device Tracker as SKU# BTRY-NGTC5TC7-44MA-01

- Same robust housing as the version with BLE beacon for optimal performance and durability.
- Same advanced battery state of health features as BLE battery.



Extended capacity battery with PowerPrecision Plus

SKU# BTRY-NGTC5TC7-66MA-01

Extended capacity 7,000 mAh battery with PowerPrecision Plus.

- Premium-grade battery cells with longer lifecycle and tested to meet rigorous controls and standards.
- Obtain advanced battery state of health information including charge level and battery age based on usage patterns.



Wireless charging battery with PowerPrecision Plus

SKU# BTRY-NGTC5TC7-44MAWC-01

Standard capacity 4,680 mAh battery with Wireless charging and PowerPrecision Plus.

- Premium-grade battery cells with longer lifecycle and tested to meet rigorous controls and standards.
- Obtain advanced battery state of health information including charge level and battery age based on usage patterns.
- Works great with FR55 wireless charging vehicle cradle SKU# CRD-TC58-WCVC-01 ([listed later in this document](#)).

Spare battery chargers



Battery charger

SKU# SAC-NGTC5TC7-4SCHG

Spare battery charger to charge any four spare Li-ion batteries.

- Standard capacity 4,680 mAh batteries charge from 0–90% in about 4 hours.
- Sold separately: Power Supply [SKU# PWR-BGA12V50W0WW](#), DC Cable [SKU# CBL-DC-388A1-01](#) and Country-specific AC Line cord ([listed later in this document](#)).



Battery charger kit

SKU# SAC-NGTC5TC7-4SCHG-01

Spare battery charger to charge any four spare Li-ion batteries.

- Standard capacity 4,680 mAh batteries charge from 0–90% in about 4 hours.
- Includes: Power Supply [SKU# PWR-BGA12V50W0WW](#), DC Cable [SKU# CBL-DC-388A1-01](#)
- Sold separately: Country-specific AC Line cord ([listed later in this document](#)).



Accessories that power devices



Power supply, cables, and adapters

Power supply and cable matrix

SKU#	Description	Note
PWR-BGA12V108W0WW	Level VI AC / DC power supply brick. AC Input: 100–240V, 2.8A. DC Output: 12V, 9A, 108W.	Included in: <ul style="list-style-type: none"> • CRD-NGTC5B-5SC5D • CRD-NGTC5B-5SE5D • CRD-NGTC5B-5SC4B
CBL-DC-381A1-01	DC line cord for running multi-slot cradles from a single Level VI power supply.	
PWR-BGA12V50W0WW	Level VI AC / DC power supply brick. AC Input: 100-240V, 2.4A. DC Output: 12V, 4.16A, 50W.	Included in: <ul style="list-style-type: none"> • CRD-NGTC5B-2SC1B • CRD-NGTC5B-2SE1B
CBL-DC-388A1-01	DC line cord for running single-slot cradles or battery chargers from a single Level VI power supply.	Sold separately. Use for SAC-NGTC5TC7-4SCHG .
CBL-TC5X-USBC2A-01	USB-A to USB-C communications and charging cable, 1m long	Sold separately. Use to: <ul style="list-style-type: none"> • Directly charge FR55 using a wall wart • Connect FR55 to a computer (developer tools) • Charge FR55 in a vehicle (can be used with cigarette light adapter SKU# CHG-AUTO-USB1-01, if needed)
CBL-TC2Y-USBC90A-01	USB-A to USB-C cable with 90° bend in USB-C adapter	
CBL-DC-523A1-01	DC Y-line cord for running two spare battery chargers to a single Level VI power supply SKU# PWR-BGA12V108W0WW .	Sold separately. Use to: Consolidate power supplies for multiple spare battery chargers proximally placed to each other.
KIT-PWR-12V50W	Power supply kit including Power Supply SKU# PWR-BGA12V50W0WW and DC line cord SKU# CBL-DC-388A1-01 .	Sold Separately: Country-specific AC line cord.
CBL-DC-382A1-01	DC line cord for running five-slot cradles when using Level VI Efficiency power supply SKU# PWR-BGA12V108W0WW . Includes black extension tab for releasing the cable.	
CHG-AUTO-CLA1-01	Cigarette lighter auto charger for vehicle cradle SKU# CRD-TC58-WCVC-01 .	Sold separately. Required for use with SKU# CRD-TC58-WCVC-01 to charge device.
CHG-AUTO-HWIRE1-01	Hard-wired auto charger cable for USB I / O Hub in vehicle cradle SKU# CRD-TC58-WCVC-01 .	
PWR-WUA5V12W0XX	USB type A power supply adapter (wall wart). Replace 'XX' in SKU as follows to get the right plug style based on region: US (United States) • GB (United Kingdom) • EU (European Union) AU (Australia) • CN (China) • IN (India) • KR (Korea) • BR (Brazil)	Sold separately. Use with a communications & charge cable to directly charge FR55 device drawing power from a wall socket.

Power supply, cables, and adapters

Country-specific AC line cords: grounded, 3-prong

SKU#	Country / region	Note
23844-00-00R	North America (United States, Canada, Mexico)	7.5 feet long Commonly used with chargers mounted in server racks
50-16000-678R	North America (United States, Canada, Mexico)	3 feet long
50-16000-221R	North America (United States, Canada, Mexico)	6 feet long
50-16000-727R	Brazil	1.8 meters (6 feet) long
50-16000-680R	Argentina	1.8 meters (6 feet) long
50-16000-217R	American Samoa, Australia, New Guinea	1.8 meters (6 feet) long
50-16000-218R	Japan	1.8 meters (6 feet) long
50-16000-219R	Antigua, Bermuda, Burma, Channel Islands, Hong Kong, Iraq, Ireland, Malaysia, North Ireland, Scotland, Singapore, United Kingdom, Wales	1.8 meters (6 feet) long
50-16000-257R	China	1.8 meters (6 feet) long
50-16000-220R	Europe, Abu Dhabi, Bolivia, Dubai, Egypt, Iran, Korea, Russia, Vietnam	1.8 meters (6 feet) long
50-16000-671R	Italy	1.8 meters (6 feet) long
50-16000-669R	India, S. Africa, Africa	1.8 meters (6 feet) long



Accessories that power devices



Power supply, cables, and adapters

Country-specific AC line cords: grounded, 2-prong

SKU#	Country / region	Note
50-16000-182R	United States	Type A NEMA 1-15 plug
50-16000-255R	Europe, Abu Dhabi, Bolivia, Dubai, Egypt, Iran, Korea, Russia, Vietnam.	Type C CEE7/16 plug
50-16000-670R	Bermuda, England, Hong Kong, Iraq, Ireland, Malaysia, North Ireland, Scotland, Singapore, United Kingdom, Wales	



Vehicle chargers and accessories

Wireless charger for vehicles

SKU# CRD-TC58-WCVC-01

FR55 Wireless charger for vehicles.

- Compatible exclusively with FR55 devices equipped with a wireless charging battery. Can be mounted using four AMPS-pattern holes.
- Includes a holder for stylus that can be installed either to the left or right of device in cradle. (Can also be removed if not needed.)
- Requires: Rugged Boot [SKU# SG-FR55EXO-1](#) and wireless battery [SKU# BTRY-NGTC5TC7-44MAWC-01](#). All sold separately.
- Required to charge: Cigarette lighter adapter auto charge cable [SKU# CHG-AUTO-CLA1-01](#) OR hard-wired auto charge cable [SKU# CHG-AUTO-HWIRE1-01](#).
- For mounting options: see [Vehicle Holders and Mounts](#) listed later in this document.



Cigarette lighter adapter plug

SKU# CHG-AUTO-USB1-01

USB cigarette lighter adapter plug.

- Used with USB C Cable [SKU# CBL-TC5X-USBC2A-01](#) (sold separately) to provide in-vehicle charging.
- Includes two USB-A ports providing higher current (5V, 2.5A) for faster charging.



NOTE

For mounting options and non-powered vehicle holders, please see section titled, "[Vehicle Holders and Mounts](#)", in this document.

For charging cables that can be used with vehicle holders, please see section titled, "[Power Supply, Cables, and Adapters](#)", in this document.

Accessories that enable productivity solutions



Vehicle holders and mounts



Vehicle holder

SKU# CRD-TC5NG-NCCD-01

Non-powered vehicle holder.

- Holds device in vehicle installations.
- Spring tension on holder and does not support Pistol Grip Handle.
- Provides access to USB-C port on bottom of device allowing device to be charged.
- Requires device with rugged boot [SKU# SG-FR55EXO-01](#).
- Available for mounting using [SKU# RAM-B-166U](#).



Vehicle mounting hardware

SKU# RAM-B-166U

Vehicle cradle windshield suction cup mount.

- RAM twist lock suction cup with double socket arm and diamond base adapter.
- Overall length: 6.75".
- Attaches to back of vehicle cradles.



Vehicle mounting hardware

SKU# RAM-B-238U

Vehicle cradle RAM mount ball.

- RAM 2.43" x 1.31" diamond ball base with 1" ball.
- Attaches to back of vehicle cradles.



Vehicle mounting hardware

SKU# 3PTY-PCLIP-241478

ProClip forklift / vehicle cradle clamp mount – for square frame mounting.

- Attaches to square bars of vehicles / forklifts.
- Clamp is 5.125" x 3.75" and can accommodate bars of varying thicknesses.
- 6" long arm on clamp uses AMPS hole pattern for mounting ProClip cradles like [SKU# 3PTY-PCLIP-241475](#).

Accessories that enable productivity solutions



Headsets

Close gaps, Open possibilities with Workcloud Sync

Usher in a new era of transformation—one led by your frontline and powered by Zebra Workcloud Sync. One where communication and information flows freely and gaps between teams, workflows and data are closed.

With Workcloud Sync, hindered workers become effective problem solvers, contributing their best. Critical workflows are streamlined in one place, on one device, equipping workers with the information they need, right at their fingertips.

Only Zebra offers the most complete lineup of software and rugged hardware with the scalability, support and service needed to make the greatest impact where it counts—on the frontline.

[Learn more about you can elevate your frontline workers with Zebra Workcloud Sync.](#)



Wired headsets for Workcloud Sync

SKU# HDST-USBC-PTT1-01

PTT headset with USB-C connector; one-piece solution.

- For Push-To-Talk (PTT) applications with volume up / volume down / PTT buttons. Compatible with PTT Express / PTT Pro.
- Rotating earpiece allows for right or left ear configuration. Mono headset with microphone.
- Includes clip for attaching PTT button to clothing.

Headsets

Rugged Bluetooth and corded HD voice headsets for the most demanding industrial environments

When it comes to enabling speech-driven applications and voice communications in warehouses, manufacturing plants and outdoor yards, you need a headset that is specially designed for the job. The HS3100 Bluetooth and HS2100 corded headsets are loaded with features that offer everything you need in an industrial headset.

[Learn more about how these headsets deliver a superior voice experience.](#)



Wireless headsets for voice-directed picking

HS3100 rugged Bluetooth headset

Bluetooth headset for voice-directed picking applications.

- Noise cancellation tuned for Voice-Directed Picking applications.
- Swap batteries on the fly — without losing the Bluetooth connection.
- Split-second tap-to-pair simplicity using NFC. 15 hours of battery power.

SKU#	Description
HS3100-OTH	HS3100 Rugged Bluetooth Headset Over-The-Head Headband includes HS3100 Boom Module and HSX100 OTH Headband Module
HS3100-BTN-L	HS3100 Rugged Bluetooth Headset (Behind-the-neck headband left)
HS3100-OTH-SB	HS3100 Rugged Bluetooth Headset (Over-the-head headband) includes HS3100 Shortened Boom Module and HSX100 OTH headband module
HS3100-BTN-LSB	HS3100 Rugged Bluetooth Headset (Behind-the-neck headband left) includes HS3100 Shortened Boom Module and HSX100 BTN headband module
HS3100-SBOOM-01	HS3100 Shortened Boom Module (includes microphone boom, battery and windscreen)

Wrist mounts and comfort pad



Arm / wrist mount with standard length strap

SKU# SG-NGTC5-WMADP1-01

Wrist mount with standard strap.

- Swivel design allows device to be viewed in portrait or landscape mode enabling hands-free functionality.
- Velcro-free design uses non-absorbent materials that can be wiped down.
- Strap length can be adjusted between 128 to 191 mm (approx. 5.0 to 7.5").
- Includes carrier, comfort pad [SKU# SG-NGWT-CMPD-01](#) and small / medium sized wrist strap [SKU# SG-NGWT-WSTPST-01](#).
- Requires rugged boot [SKU# SG-FR55EXO-01](#) installed on device.

** Please note this accessory is a consumable and may require replacement during the device's lifespan.*



Arm / wrist mount with extended length strap

SKU# SG-NGTC5-WMADP1-02

Wrist mount with extended strap.

- Includes: Carrier, Comfort pad [SKU# SG-NGWT-CMPD-01](#), medium / large size wrist strap [SKU# SG-NGWT-WSTPLN-01](#).
- Strap length can be adjusted between 164 to 265 mm (approx. 6.5 to 10.5").
- Requires rugged boot [SKU# SG-FR55EXO-01](#) installed on device.

** Please note this accessory is a consumable and may require replacement during the device's lifespan.*



Replacement comfort pad for wrist mount

SKU# SG-NGWT-CMPD-02

Replacement comfort pad for wrist mount.

- Soft rubber, easily removable, and hygienic.
- Includes ridges in the top surface that assists with alignment during installation and reduces the occurrence of slippage, especially in the presence of sweat.

** Please note this accessory is a consumable and may require replacement during the device's lifespan.*

Wrist straps and arm sleeve



Standard replacement wrist strap

SKU# SG-NGWT-WSTPST-01

Replacement wrist strap – standard size.

- White dial and accent color on strap identify size as standard (small / medium).
- Strap length can be adjusted between 128 to 191 mm (approx. 5.0 to 7.5").

** Please note this accessory is a consumable and may require replacement during the device's lifespan.*



Extended size replacement wrist strap

SKU# SG-NGWT-WSTPLN-01

Replacement wrist strap – extended size.

- Black dial and accent color on strap identify size as extended (medium / large).
- Strap length can be adjusted between 164 to 265 mm (approx. 6.5 to 10.5").

** Please note this accessory is a consumable and may require replacement during the device's lifespan.*



Extra-large replacement wrist strap

SKU# SG-NGWT-WSTPXL-01

Replacement wrist strap – extra-large size.

- Blue dial and accent color on strap identify size as extra-large.
- Strap length can be adjusted between 218 to 375 mm (approx. 8.5 to 14.75").

** Please note this accessory is a consumable and may require replacement during the device's lifespan.*



Arm sleeve

SKU# SG-WT4027050-01R

Arm sleeve – pack of 5.

- Worn under wrist mount strap if worker is in short-sleeved shirt and wants:
 - Extra sweat wicking/ personal layer
 - Extra comfort
 - Extra slip-resistance
- Material will not snag. One size fits all.
- Washable in mild detergent. Should be air dried.

** Please note this accessory is a consumable and may require replacement during the device's lifespan.*

Hand strap, stylus and tether



Hand strap

SKU# SG-NGTC5TC7-HDSTP-03

Set of three Hand Straps

- Allows device to be easily held in palm of hand.
- Attaches directly to device, even with rugged boot installed.
- Includes loop for holding optional stylus.
- Sold separately: Rugged boot [SKU# SG-FR55EXO-01](#).
- Also available as a 50-pack — 3 hand straps— [SKU# SG-NGTC5TC7-HDSTP-50](#).
- Also available as a 100-pack — 3 hand straps— [SKU# SG-NGTC5TC7-HDSTP-100](#).

** Please note this accessory is a consumable and may require replacement during the device's lifespan.*



Stylus

SKU# SG-STYLUS-TCX-MTL-03

Fiber tipped stylus – pack of 3.

- Heavy-duty and made from stainless steel / brass. No plastic parts — real pen feel. Can be used in rain.
- Micro-knit, hybrid-mesh, fiber tip provides silent, smooth gliding use. 5" length.
- Big improvement over rubber tipped or plastic tipped stylus.
- Compatible with all capacitive touch screen devices.
- Tether to device or hand strap using [SKU# SG-TC5NGTC7NG-TETHR-03](#).

** Please note this accessory is a consumable and may require replacement during the device's lifespan.*



Stylus tether

SKU# SG-TC5NGTC7NG-TETHR-03

Stylus tether.

- Can be attached to device tower bar.
- When hand strap is used, tether should attach to hand strap [SKU# SG-NGTC5TC7-HDSTP-03](#) directly (not to terminal towel bar).
- String type tether prevents loss of stylus.
- NOTE: Other Zebra coiled tethers are not recommended for use with FR55 as they may interfere with other accessories.

** Please note this accessory is a consumable and may require replacement during the device's lifespan.*

Accessories that enable productivity solutions



Cables and adapters



Cradle to USB cable

SKU# 25-124330-01R

Single slot cradle to PC / host USB cable.

- Allows for active-sync connectivity between the mobile computer single- or two-slot cradle and a host device.
- Micro-USB connection on cradle end.
- The cable is approximately 48" long.
- Sold separately: Required for use with [SKU# CRD-NGTC5B-2SE1B](#) if syncing with a computer is desired while FR55 is in the charger.



USB-C cable

SKU# CBL-TC2X-USBC-01

USB-A to USB-C Cable.

- Attaches to USB-C port on bottom of device.
- The cable includes an additional ferrite bead.
- The cable is approximately 5 feet or 1.5 meters long.

Rugged boot, Screen Protectors, and Soft Holster



Rugged boot

SKU# SG-FR55EXO-01

Rugged boot.

- Boot increases drop spec of device to 8 feet to concrete.
- Two-piece design provides for an easier installation and snaps together.

** Please note this accessory is a consumable and may require replacement during the device's lifespan.*



Screen protectors

SKU# SG-FR55-SCRNP-01

Screen protector

- Tempered glass.
- Includes alcohol wipes, cleaning cloth, and instructions needed for screen protector installation.
- Also available as a 3-pack — 3 screen protectors — SKU# SG-FR55-SCRNP-03.

** Please note this accessory is a consumable and may require replacement during the device's lifespan.*



Soft holster

SKU# SG-NGTC5TC7-HLSTR-01

Soft holster.

- Vertical orientation with open bucket design to accommodate FR55 with optional rugged boot, pistol-grip trigger handle, and / or hand strap.
- Strap on rear of holster allows adjustment for use with the accessory options mentioned above.
- Includes loop for storage of optional stylus. Nonrotating for maximum durability.
- Holster is leather material and includes cut-out for speaker output.
- Also compatible with hand strap SKU# SG-NGTC5TC7-HDSTP-03.

FR55

Introducing the **Connect Cradles** (Workstation and Point of Sale) for FR55 mobile computers. These accessories allow for the FR55 mobile computer to connect to multiple purpose-built peripherals and enable Zebra Workstation Connect on an external monitor. The Connect Cradle offers connections for standard workstation setups (monitor, keyboard, mouse) while the point-of-sale configuration provides three additional powered USB ports for setups utilizing POS-specific peripherals such as a payment terminal, receipt printer, or scanner.

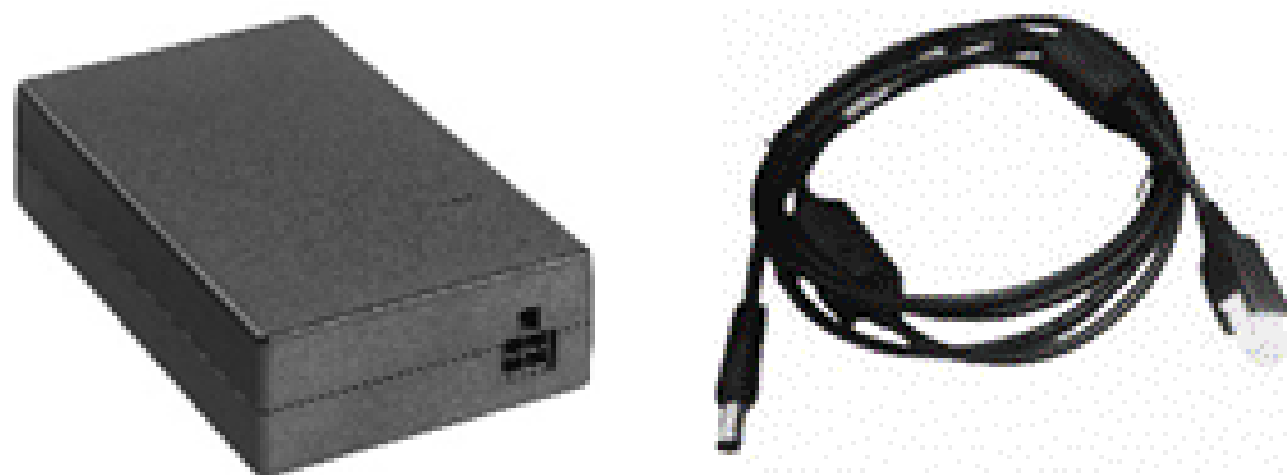


Connect Cradles

SKU# CRD-NTC5X-1SNWS-01 | SKU# CRD-NTC5X-1SNHP-01

Workstation | Point of Sale

- Workstation: FR55 Connect Cradle, allows to connect a mobile computer to an external monitor and multiple peripherals. Includes HDMI, Ethernet and USB-A (x4) ports.
- Point of Sale: FR55 Connect Cradle, allows to connect a mobile computer to an external monitor and multiple peripherals. Includes HDMI, Ethernet, USB-A (x3), 24V Powered USB (x1), 12V Powered USB (x2) ports.



Power Supply & DC Line Cord

SKU# PWR-BGA12V50W0WW | SKU# CBL-DC-388A2-01

Power Supply | DC Line Cord

- Power Supply [PWR-BGA12V50W0WW](#) for Connect Cradle : 100-240 VAC, 12VDC, 4.16A.
- DC Line Cord [CBL-DC-388A2-01](#) for above power supply: 12 VDC, 4.16A 1.8m length.



Power Supply for Point-of-Sale Cradle

SKU# PWR-BGA24V150W1WW

Power Supply for POS Cradle

- Level VI AC/DC Power Supply Brick. AC Input: 100-240V, 2.0A. DC Output: 24V, 6.25A, 150W.
- Requires: Country Specific AC grounded line cord.