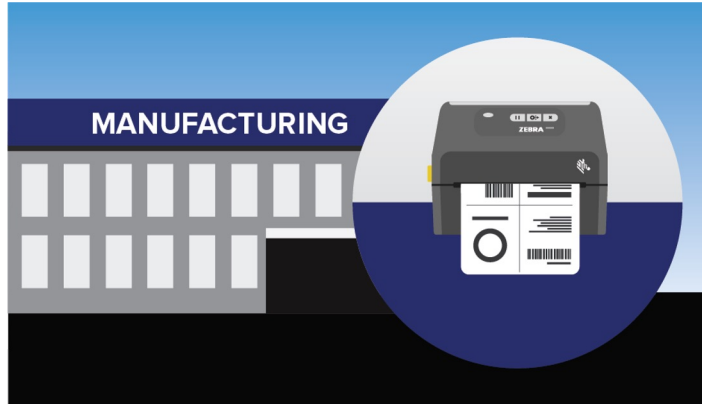
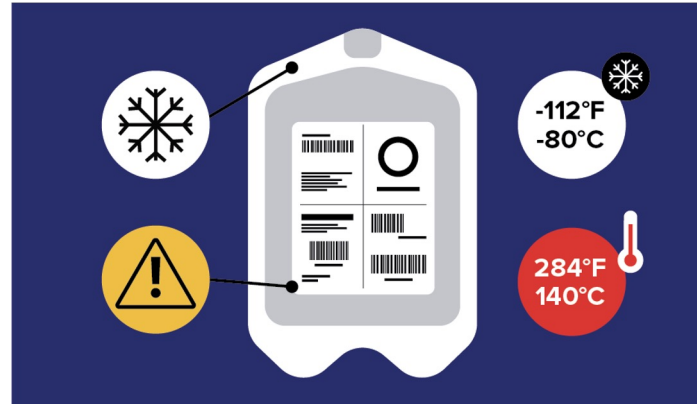


# Confident Management of Blood Stocks

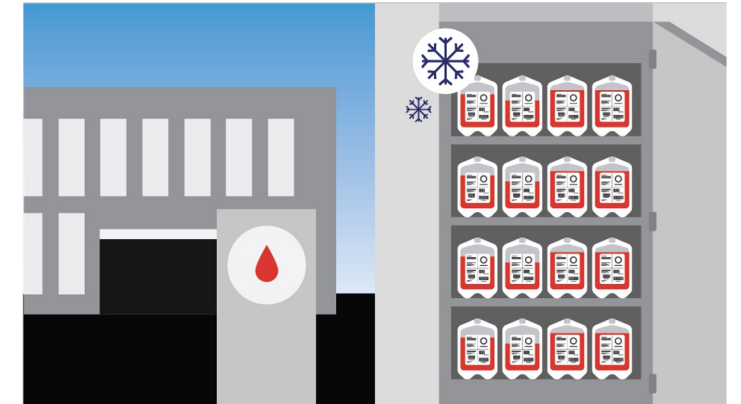
How to give your teams the insight they need to identify, track, and manage blood bags with assurance.



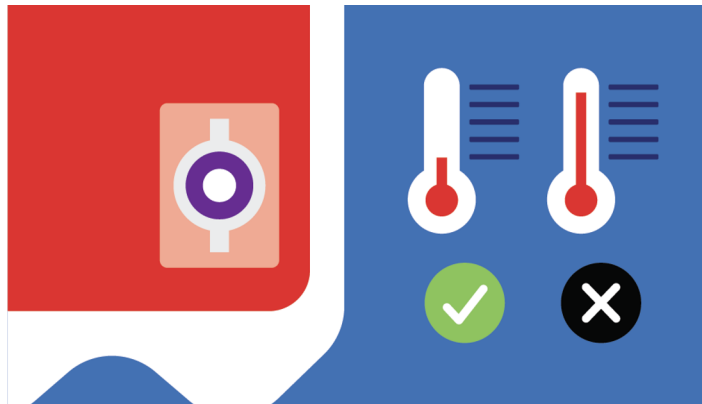
Specially-formulated printable labels attached to blood bags at manufacture enable their tracing to source, with product codes and batch numbers encoded by the barcode.



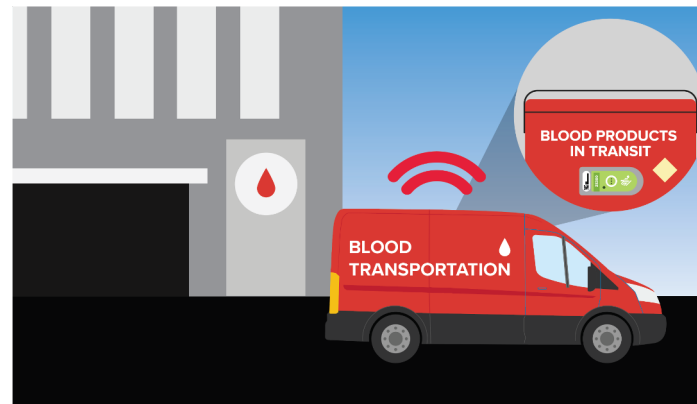
The labels remain in place during the bag's lifecycle, even when exposed to -112°F/ -80°C in the cold store and heated to 284°F/ 140°C during sterilisation. Bespoke adhesive prevents cytotoxicity.



When blood is donated barcode labels are attached comprising materials and adhesives which prevent damage to the contents. The labels remain readable and scannable even when exposed to extreme temperatures.



Temperature-sensitive indicators are also attached, the devices change colour from white to red when blood products have reached or exceeded 42.8°F/6°C or 50°F/10°C. The change is non-reversible, even if the blood is re-cooled.



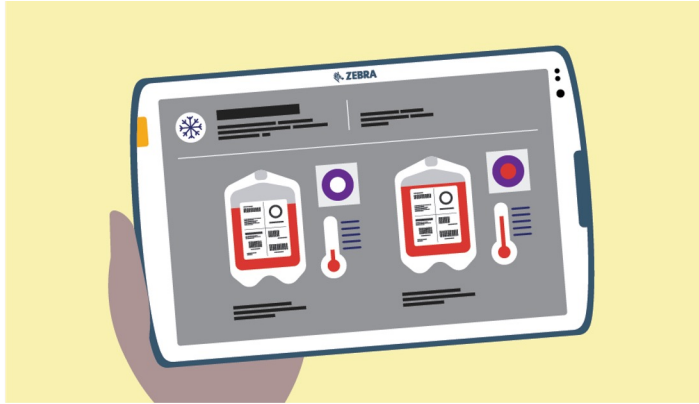
When blood is transferred from the blood bank to another location, the indicators monitor the heat exposure to the blood. For extra accountability, electronic temperature sensors can be fixed to medical bags.



The electronic sensors continually monitor temperatures which can be streamed to the cloud, and / or downloaded at the receiving clinic through Bluetooth®.

# Confident Management of Blood Stocks

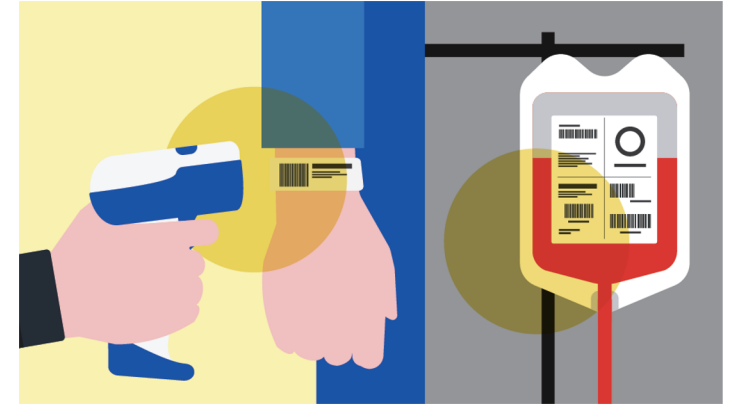
How to give your teams the insight they need to identify, track, and manage blood bags with assurance.



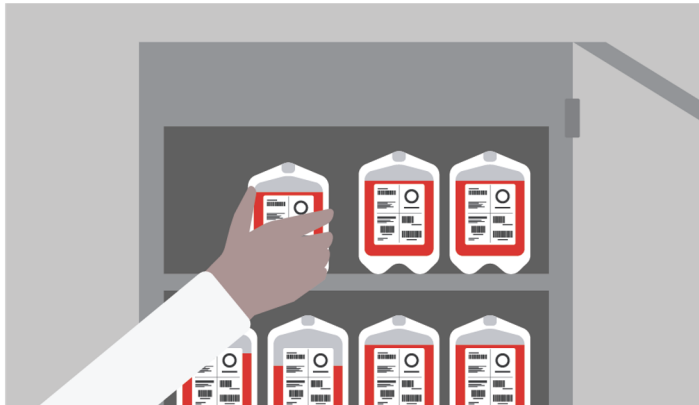
A ready-to-go app is available for Zebra devices to access the data. Apps can also be created for other devices.



The temperature indicator remains white. This provides a visual verification that the product hasn't been exposed to an excursion.



When blood is transfused into the patient, a scan of their wristband, and the blood bag can help confirm the right blood has been administered.



If the blood issued from the blood bank is not completely consumed, the indicator should be used to verify proper temperature management while away from the blood bank. Staff can view the indicators and decide if blood can be put back into the blood bank storage.

- ✓ Ensure bag traceability for quality and recall purposes
- ✓ Enable accurate data capture and records keeping at the point of care
- ✓ Provide clinicians with the insight to make confident decisions
- ✓ Ensure accountability during transportation
- ✓ Preserve precious blood stocks

ZEBRA



**NA and Corporate Headquarters**  
+1800 423 0442  
inquiry4@zebra.com

**Asia-Pacific Headquarters**  
+65 6858 0722  
contact.apac@zebra.com

**EMEA Headquarters**  
zebra.com/locations  
contact.emea@zebra.com

**Latin America Headquarters**  
zebra.com/locations  
la.contactme@zebra.com

---

ZEBRA and the stylized Zebra head are trademarks of Zebra Technologies Corp., registered in many jurisdictions worldwide. All other trademarks are the property of their respective owners. ©2024 Zebra Technologies Corp. and/or its affiliates. R1, Doc.# 3616, 05/2024.