



Transform your store operations with hands-free voice communications with Zebra's WS101

Bluetooth Communication Badge



Imagine the productivity gains when your team can work without stopping to touch a screen or device.

That's the power of hands-free voice—which you can easily add to your workflows with Zebra's WS101 Bluetooth Communication Badge. Pair this easy-to-wear compact device with any Bluetooth-enabled Zebra or other Android and iOS device to help your teams move faster—and serve better.

From stock checks to customer assistance—hands-free voice gets it done.

Using voice-enabled applications running on the host mobile device, workers can simply use natural language to ask for what they need.

The result?

Effortless task management.

Seamless communication.

And customer help, right when and where it's needed.



Engineered for effortless communication.



Crystal clear voice with advanced audio features



Works with voice-enabled apps and Zebra's Workcloud Sync PTT



Get assistance by pressing the red Duress Button



Instantly activate hands-free operation with a Wake Word



Silence calls with Do Not Disturb



Listen to messages with voice text-to-speech



Audio alerts, haptic feedback and LED notifications

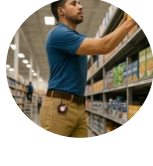


Integrated speaker/mic or 3.5mm audio jack



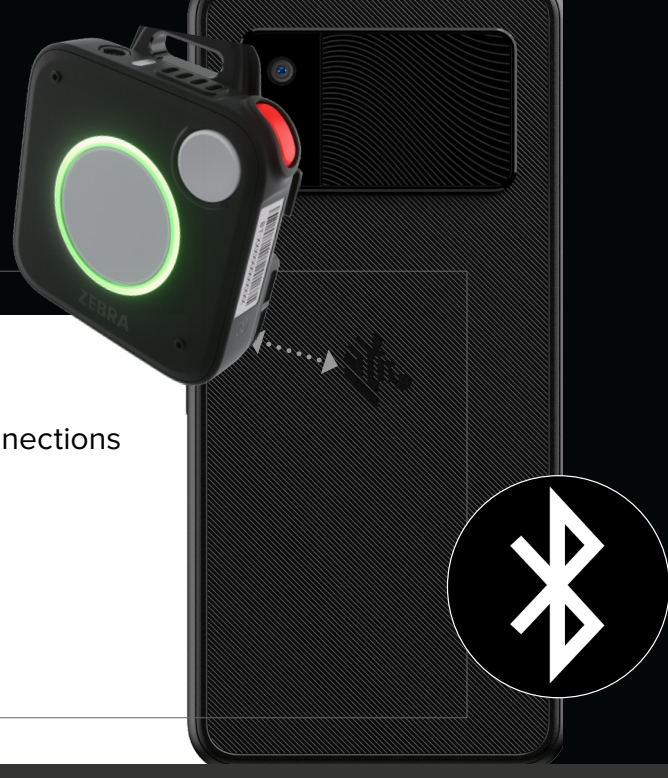
Compact. Comfortable. Completely wearable.

- **So small.** Weighs under two ounces, less than two inches square, and just over half an inch thin. So comfortable, workers won't even notice they're wearing it.
- **Flexible wearing styles.** Clip it on a lapel, collar or placket—or wear it around the neck on a lanyard.



Seamless pairing with your current and future devices.

- Just tap to pair with any NFC-enabled host
- Connect via Bluetooth v5.4 for stable and secure connections
- Works with any Bluetooth-enabled...
 - Zebra Android mobile computers and tablets
 - Android smartphones and tablets
 - iOS smartphones and tablets



Reliable and ready for every shift.



Your operations never stop, and neither does the WS101. It's built to perform, shift after shift.



Rugged design

Drop it, disinfect it, use it in dusty areas or out in the rain—the WS101 is built to last and lower your TCO



Removable full-shift battery

Simply swap in a fully charged battery and support back-to-back shifts



Scalable backroom charging solutions

Zebra's ShareCradle system offers fast charging, high density and modular charging—or charge the WS101 via a standard USB cable

Easy to deploy and manage.

Add hands-free voice—without a complicated setup

The WS101 is an easy-to-deploy Bluetooth peripheral. That means no additional servers, separate wireless networks or other backend infrastructure are needed.

And since you can manage the WS101 with your Enterprise Mobility Management (EMM)* running on the host device,

you can add this new type of device—and still have the simplicity of a single management platform.

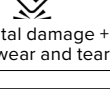


Reduce workflow disruptions and repair costs with Zebra OneCare.

Even the smallest of enterprise devices needs an enterprise maintenance plan—and nobody is more qualified than the device manufacturer to keep your devices up and running at peak performance.

Zebra OneCare Essential provides everything you need to get the most out of your WS101 Bluetooth Communication Badges.

Zebra OneCare Essential[®]



Accidental damage + normal wear and tear



Live technical support 8am-5pm in your timezone



3-day turnaround on repairs



Ready to serve customers faster? Let hands-free voice help.

Learn more about how the WS101 can help your retail operations at www.zebra.com/ws101-ws101-h

* EMM support available Q4 2025

ZEBRA and the stylized Zebra head are trademarks of Zebra Technologies Corp., registered in many jurisdictions worldwide. All other trademarks are the property of their respective owners. ©2025 Zebra Technologies Corp. and/or its affiliates. 09/04/2025.

